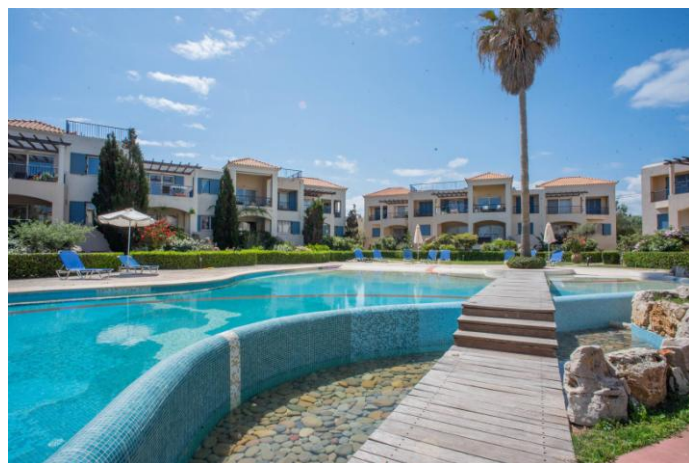
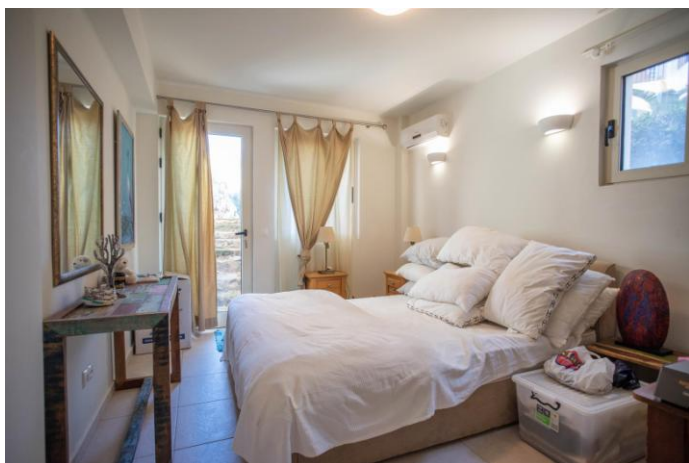


LUXURY 3-BED APARTMENT SET IN A BEACHFRONT COMPLEX WITH SHARED POOL NEAR MALEME



**REF:
YHOC-187**



Miette Lauwers
Tel: (00 30) 6947 374 736
info@yourhomeoncrete.com
www.yourhomeoncrete.com

**PRICE:
€325,000**

HOUSE SIZE: 122m²

LAND SIZE: SHARED

Luxury 3-bed apartment/villa laid out on two floors, set in a stunning beach-front development with a large shared swimming pool located in Pirgos Psilonerou!

The apartment has been built to the highest standards and includes a small plot of private land as well as a parking space and many more!

INTERIOR:

The apartment consists of two floors, each comprising an open-plan living room/fully equipped kitchen or kitchen area, a bathroom and bedrooms. This provides the flexibility to be used either as one bigger apartment or 2 separated apartments as each floor also has its own private entrance.

Entering from the top floor, you walk into a bright and light living room/kitchen area which also has a dining area. To the right of the main entrance is the fully equipped kitchen which includes a stainless steel fridge/freezer and fitted oven and hob, as well as cupboards and a single and half bowl sink.

From the living room area, a large glass sliding patio door opens to a lovely covered terrace with a sitting area provided with exterior furniture overlooking the amazing swimming pool and gardens of this unique development. This is the perfect place for outdoor wining and dining.

A very light, spacious master bedroom with floor to ceiling built-in wardrobes is located next to the fully tiled bathroom including bathtub with shower.

Wooden stairs lead to the lower floor apartment which has been transformed into a second, self-contained unit. A storage space under the stairs contains the washing machine.

This unit comprises of a spacious living room, two double bedrooms, a kitchen corner with a small cooking plate and a bathroom consisting of a toilet, hand basin and glass cubicled shower. Each bedroom has access to the exterior; one is equipped with a floor to ceiling wardrobes and the second one with a 2-door closet.

EXTERIOR:

The property profits of two small pieces of private land within the large complex, which is planted with shrubs and flowers and accessed with stone steps (secured with a banister) from the terrace.

The unique development displays an intricate mix of design, comfort and construction, inspired by the true essence of Mediterranean living. It offers exquisite gardens enhanced by a large, shared swimming pool with a gentle stream running through the entire project overlooking the sea.

Paved paths lead the way within the development, either around the pool area or around the parking area.

THE AREA:

Pirgos Psilonerou is bordering with the famous village of Maleme which is a large village where all necessary amenities can be found all year round, including a butcher, cafes, tavernas, supermarket, pharmacy and local transportation. The very peaceful beach of Pirgos Psilonerou is the ideal spot for lovers of quietness, while Platanias beach resort, with its numerous shops/bars/cafes/restaurants, is just a 5 minute drive away.

THIS PROPERTY IS IDEAL AS A HOLIDAY HOME OR A RESIDENCE AND HAS GREAT RENTAL POTENTIAL!

FEATURES:

- Reversible air conditioning units throughout
- Fully equipped kitchens
- Electrical appliances
- Built in wardrobes
- Most of the furniture
- Extra storage space under stairs
- Telephone/Internet connection with Cosmote
- Aluminum window frames and shutters
- Double glazed windows with fly screens
- Private parking spot
- Private landscaped garden
- Irrigation system
- Large shared swimming pool
- Connected to sewage system

